

## KOKO CARE Chrome



AS 1428.1  
ACCESSIBLE  
COMPLIANT

- Can be installed to comply with AS1428.1
- Easy-to-operate, fingertip control handles
- Sleek, soft-square design with chrome finish
- Brass construction
- Quality European cartridges (35mm)
- Suitable for mains pressure, max. 500kpa
- PEX Split-proof flexi-hoses



#### DOMESTIC WARRANTIES



15 Year Warranty:  
Ceramic Disc  
Cartridges



15 Year Warranty:  
Labour on  
Cartridges

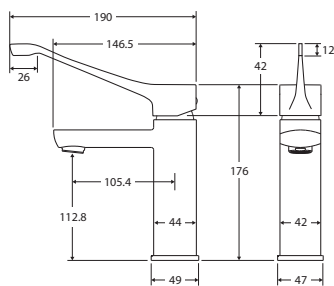


15 Year Warranty:  
Replacement  
Parts or Product

### KOKO CARE Basin Mixer

**\$260 • 218103D**

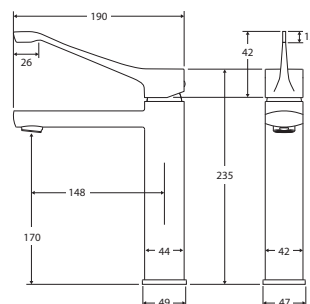
- Long handle for easy reach & operation
- Fixed position
- **WELS 5 Star rated, 5L/min**



### KOKO CARE Medium Basin Mixer

**\$369 • 218109D**

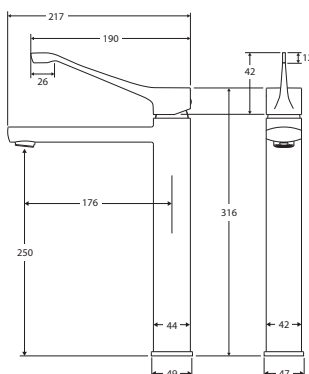
- Long handle for easy reach & operation
- Fixed position
- **WELS 5 Star rated, 5L/min**



### KOKO CARE Tall Basin Mixer

**\$430 • 218107D**

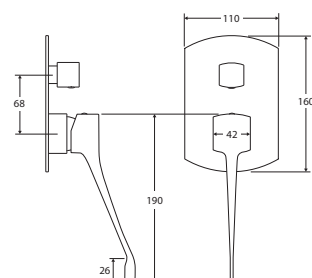
- Long handle for easy reach & operation
- Fixed position
- **WELS 5 Star rated, 5L/min**



### KOKO CARE Wall Mixer Diverter

**\$269 • 218102D**

- Long handle for easy reach & operation
- Designed for shower & bath
- WELS rating not required



### KOKO CARE Wall Mixer

**\$230 • 218101D**

- Long handle for easy reach & operation
- Designed for shower & bath
- WELS rating not required

